

Mastery of core music theory concepts is essential for success in music courses at the University of Windsor. If a student encounters difficulty completing the following exercises accurately, or if completing the exercises takes longer than hour, they will likely have difficulty in core academic music courses at the University of Windsor. Summer music theory rudiments and piano study are essential for students entering SoCA's Music programs.

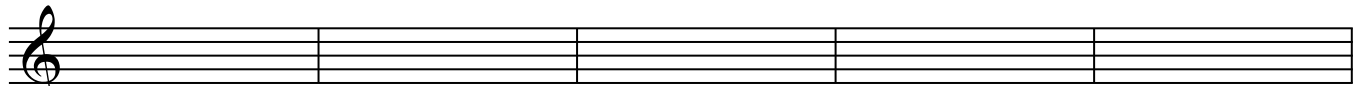
Name the following major key signatures:

Name the following minor key signatures

Write the following Key Signatures.



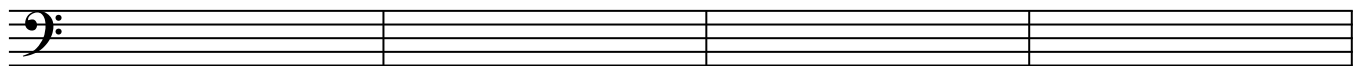
F major G major Bb major A major B major E major



Bb minor D minor F minor F# minor E minor



F# major Ab major C# major D major



B minor C minor A minor C# minor



Db major C major Eb major Gb major D major



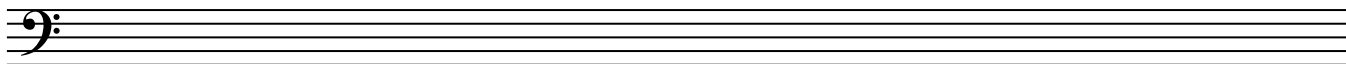
G minor G# minor D# minor Eb minor

Write the following major scales (ascending & descending) without a key signature.

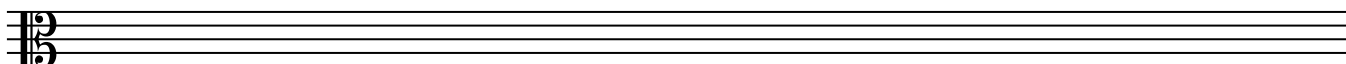
Ab Major



D Major

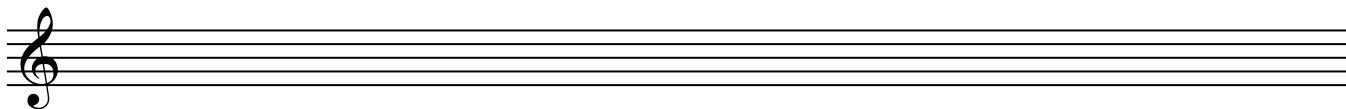


G Major

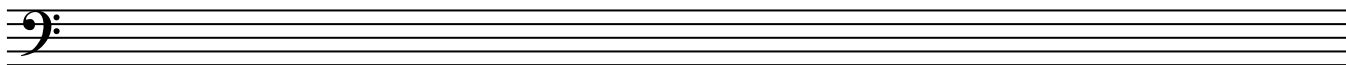


Write the following melodic minor scales (ascending & descending) with a key signature.

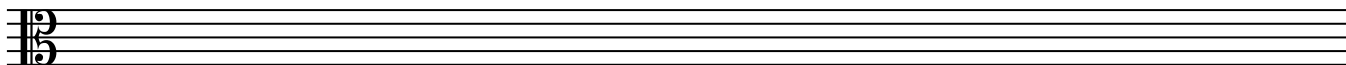
E melodic minor



F melodic minor

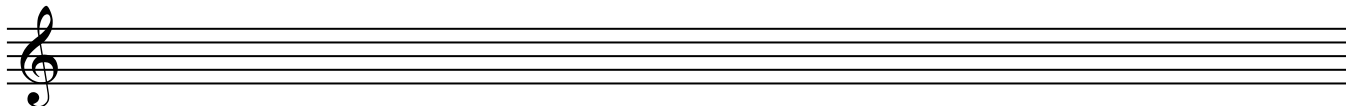


D melodic minor

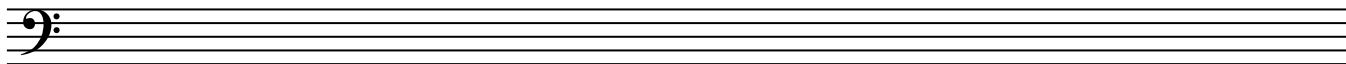


Write the following harmonic minor scales (ascending & descending) without a key signature.

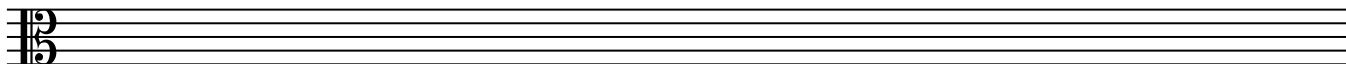
F# harmonic minor



Bb harmonic minor



G harmonic minor



Analyze the following intervals. Use **+** for major intervals, **-** for minor intervals, **dim** for diminished intervals, **P** for perfect intervals, and **aug** for augmented intervals. The first one is completed for you as an example.

aug 2nd

Write the indicated intervals ABOVE the given note (Do not add accidentals to the given note).

Perfect 4th

Major 3rd

Perfect 5th

Dim. 5th

Major 7th

Aug. 5th

Minor 3rd

Minor 6th

Write the indicated intervals BELOW the given note (Do not add accidentals to the given note).

Major 6th

Major 2nd

Minor 2nd

Minor 7th

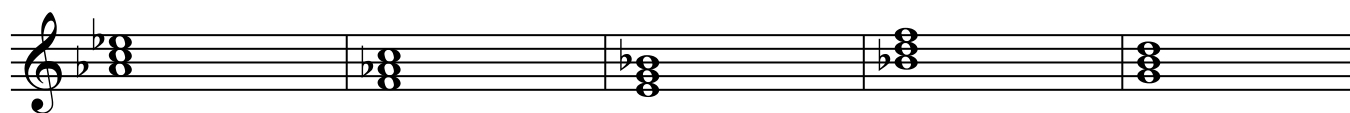
Major 3rd

Perfect 5th

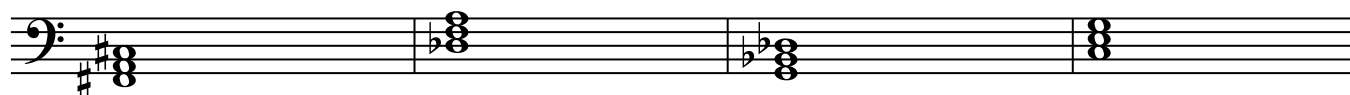
Minor 2nd

Minor 3rd

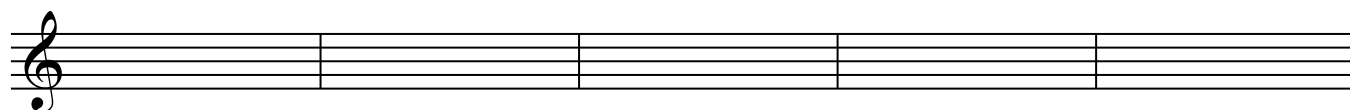
Analyze the following triads. The first one has been completed for you as an example.
Triads will be either major, minor, augmented, or diminished.



Ab Major



Write the indicated triads.



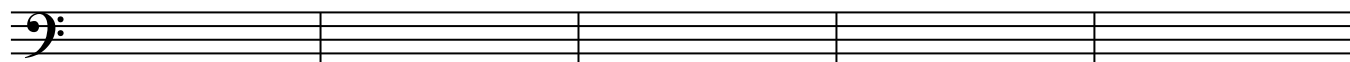
A major

F augmented

D minor

Ab minor

E diminished



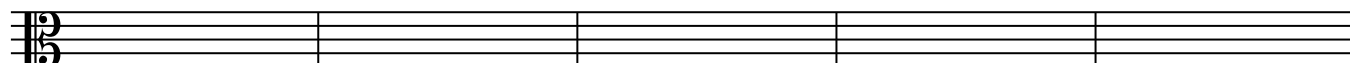
B diminished

Db major

F minor

Gb minor

E major



D major

G minor

C# diminished

F augmented

Ab major

Chord Analysis: Open Voiced Triads and Inversions

For each chord below indicate the root of the chord, the quality of the chord (major, minor, diminished, or augmented), and the inversion of the chord (root position, 1st inversion, or 2nd inversion) based upon the lowest note in the triad. The first chord has been completed for you as an example.

Root: Eb _____

Quality: Major _____

Inversion: 1st Inversion _____

Root: _____

Quality: _____

Inversion: _____

Root: _____

Quality: _____

Inversion: _____