

## Stakeholder Highlights

### Students & Alumni

- Searchable experiential catalog with insights into peer and alumni experiential paths
- Interactive Student Experience Transcript
- Tools to engage in experiential programs

### Employers, Industry and Community Partners

- Central portal to engage with the institution on experiential opportunities and partnerships
- Tools for managing participation and access to programs and course work

### Faculty and Staff

- Searchable industry database to help facilitate experiential engagement
- Tools to manage course experiential requirements

### Administration

- A single technology platform to centralize data for improved business intelligence and service delivery
- Insight Dashboards on industry, student, and community impact



## Centralized Data Analytics

010100101...

**With Outcome, your data remains your own.** Leverage the power of centralizing all your experiential data in a single system with reporting, tagging, and additional data set integration and aggregation tools to create better overall student and program outcomes.

## Outcome is...

Co-op

Career Education

Mentorship

Practicum/Clinical

Work Integrated Learning

Applied Research

Apprenticeship

Volunteer

Field Placement

On Campus Employment

Project Based Learning

Work Study

Co-Curricular

Internship

Work Integrated Education

Community Service Learning

Global Education

**Promote Your Experiences.**



# Experiential Learning Management Platform

## Catalog

1

Capture the entirety of the experiential spectrum available at your institution in a single searchable and filterable catalog.

Campus stakeholders can search out information on work integrated learning projects, co-op and internship opportunities, co-curricular activities, research projects, certificate programs, events, appointments, and mentorship offerings.

The experiential catalog gives prospective and current students the ability to investigate and plan their experiential learning path.

## Promote

2

Students and staff get valuable insights into experiences available based on student peer group

involvement, alumni experiences, and institutional experience guides.

Our pathway module is designed to better inform and promote the wealth of opportunities available to students with the goal of engaging them in experiences that positively contribute to their education, while positioning them for success after graduation.

With a suite of modules that includes Experiential, Co-op and Internship, Co-Curricular, and Career Education, the platform offers the functionality to operationalize all facets of the experiential spectrum.

Built-in tool sets designed for student advising, event and workshop management, mentorship, job postings, resume books, interaction tracking, customer relationship management (CRM), and surveys come standard in the Outcome platform, giving you everything you need to deliver a rich programming experience that scales with your needs.

## Deliver

3



## Track

4

Outcome's tracking capacity doesn't just capture student data it allows institutions full configuration control over all the variables they want to track.

This provides unique opportunities to gather insights around community impact, competency development, and student progress.

Collect all the data required to verify student participation in the experience, record faculty, industry and community partner involvement, and link the data back to academic programs.



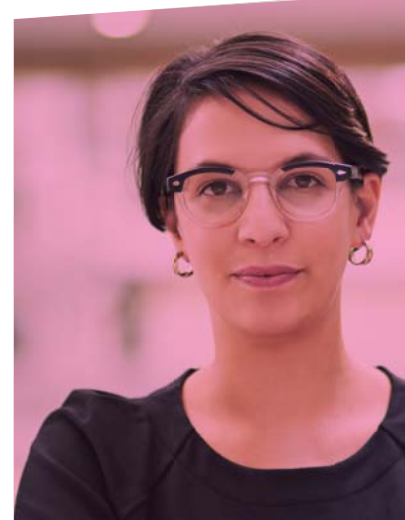
## Recognize

5

A Student Experience Transcript recognizes the entirety of the student's experience and provides them with a meaningful and efficient tool to help articulate the wealth of skill and competency development gained from participation in these programs.

With additional portfolio capabilities available, students can enhance their Student Experience Transcript with items such as a resume, samples of their work, and reflective pieces.

Employers get a trusted and verified source of information to better understand what the individuals' experiences were and how they contributed to the skillset they are recruiting for.



## Report

6

With its unique data tagging structure, Outcome provides key insights into the experiential data collected at an institution and supports the ability to measure the impact of experiential programs on communities and stakeholders.

Visual dashboards provide an in-depth look at student and industry participation, recruitment practices, the location of experiences, and the types of experiences students are completing.

These dashboards further break down this information across a range of demographic data sets such as gender, year level, and program.

